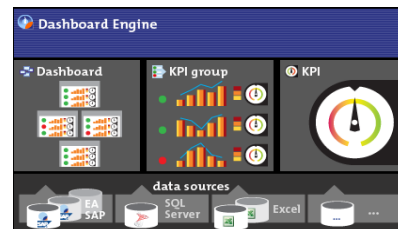


1 What is new in EA 2011?

Release 2011 of the Every Angle Solution Suite is a strong improvement of release 2010. The Every Angle team worked hard to achieve higher levels of user satisfaction in ease of use, stability, speed and coverage of SAP. The most important changes are:

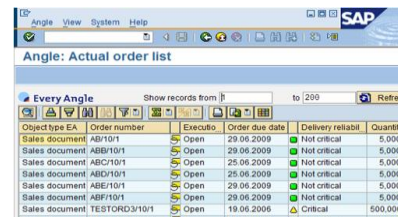
Every Angle Dashboard Engine

The Every Angle Suite is extended with a new product: the Every Angle Dashboard Engine allows users to create management dashboards on a web page in just a few days. Data sources can be Every Angle but also Oracle, SQL or Microsoft Excel.



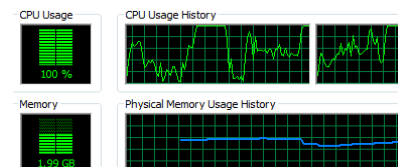
Every Angle in the SAP client ZEA03

Viewing users no longer need an Every Angle client. There is a new SAP transaction ZEA03 that shows the Every Angle system within the SAP client and allows users to execute Angles and view the result in their own SAP GUI.



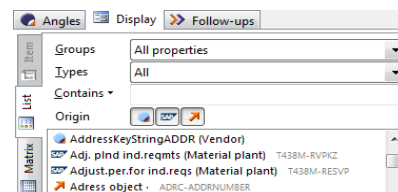
Support of huge databases

Using improved memory technology, the number of objects (orders, documents, invoices etc) that can be handled by one system is increased to over a billion.



Ease of use

Icons and technical SAP field names are added to properties. Wildcards are supported. Users can multi-select angles and copy them between systems. Help and manuals are improved.



The Every Angle system release 2011 improvements, as compared to the release 2010, are listed below. Some of these features might have been pre-released in one of the service packs of release 2010. The Every Angle Dashboard Engine is a separate product and will not be discussed in this document.

2 Ease of use for end users

The most important improvement on the end-user side is the introduction of SAP transaction ZEA03. With this capability, viewing users no longer need an Every Angle client, because they can see Every Angle angles within the SAP client itself.

Properties in the field chooser now have icons to indicate the source. Three icons are standard: the SAP logo (for fields directly displayed from the SAP database); the Every Angle logo (for calculated properties that Every Angle has added to the data); a small arrow logo (for references between objects). You can also add other icons (for example your own company logo) and link them to special properties if desired.

In addition, one can see the technical SAP field names after the property names in the field chooser. It is also possible to use these as a search-object, so it is now easier to find fields within Every Angle that have been identified on an SAP screen.

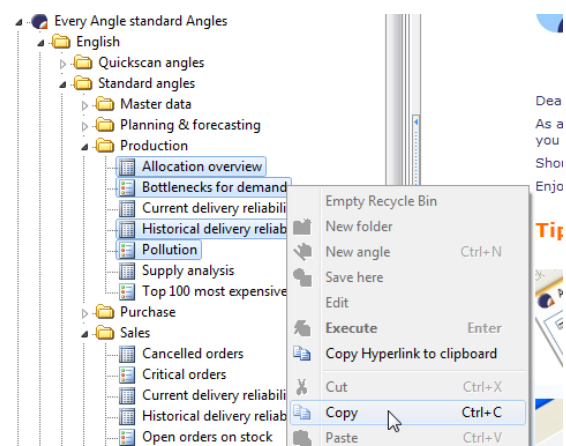
In the matrix and chart display, users have extended functionality for defining buckets for zero values and minimum and maximum values. This provides more possibilities to design the charts and matrices to the user's needs, for example, by grouping together all values above a certain value, without having to jeopardize the rest of the chart.

Every Angle introduces a new display variant: a cube. In this variant, the limitations of the matrix display (two axes, one value) are removed. Ten dimensions and values can be defined and Every Angle will create a cube for this. This functionality is especially powerful when Every Angle is used as the data engine for BI systems or dashboards.

Users can start the Every Angle system from a hyperlink, for example in an e-mail or spreadsheet. The system takes this user (after login) to the angle specified in the link.

In the Angle Wizard, users can now use wildcards like * and ? to easier define angles with string-filters. Therefore the new operator 'matches wildcard' was created.

Angles and groups of angles can now be copied as a file to disk or directly into another Every Angle client. This largely improves interchangeability of angles since angles created in one system can be easily moved to other systems. For example, now it is possible that a group of angles created in one company, is copied to a memory stick and moved to another company to be used directly. Please note that only the angle definition is copied, not the data that was the result of the execution of the angle.

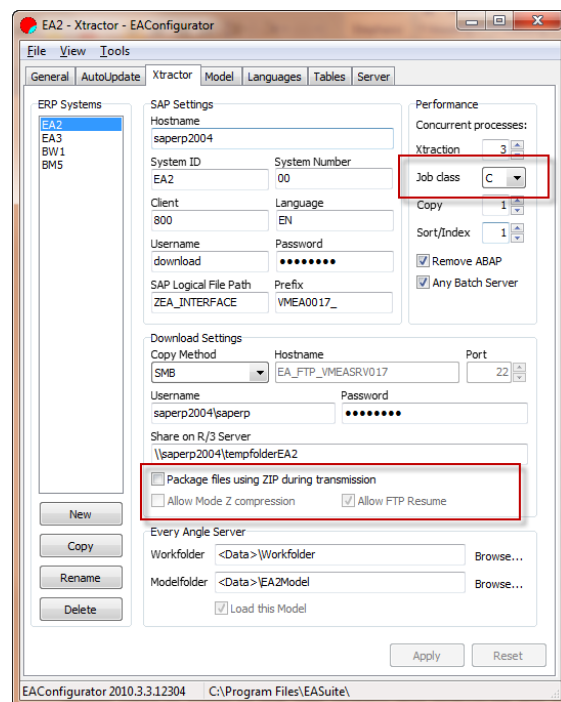


3 System management

Every Angle users granted the administrator rights now can obtain a complete overview of all the technical details of the objects in the system via a new menu option. The functionality of resetting user's passwords is extended with an unlock option.

In the Every Angle configurator, the SAP job class can be configured as A, B or C. Configuration of for example statuses and partner roles is now based on multiple languages from SAP and no longer English-only.

The extractor functionality is extended with a function for compressing data before it is copied from SAP to the Every Angle server. This functionality is especially powerful for companies with limited bandwidth on the network, or in (pilot) situations when downloading is performed over a wide area network.



To deal with the problem of hanging jobs on SAP servers, Every Angle will now automatically kill and retry a hanging job. Also, a new command KILLSAPJOB has been added to the extractor. When SAP has hanging jobs, administrators do no longer have to logon to the SAP system and search for the Every Angle download jobs. With this command, Every Angle will kill its own running jobs on SAP and retry them.

4 System performance

With regard to the system performance, the most important change is the introduction of a new class system that drastically increases the maximum number of objects in the system. The limit is moved from 200 million to over one billion.

The download speed is improved by extending the possibilities for delta-downloads. This is implemented for the long texts and document flows for the batch-where-used function. Also, the indexing of files download from SAP is made faster.

5 System configurations

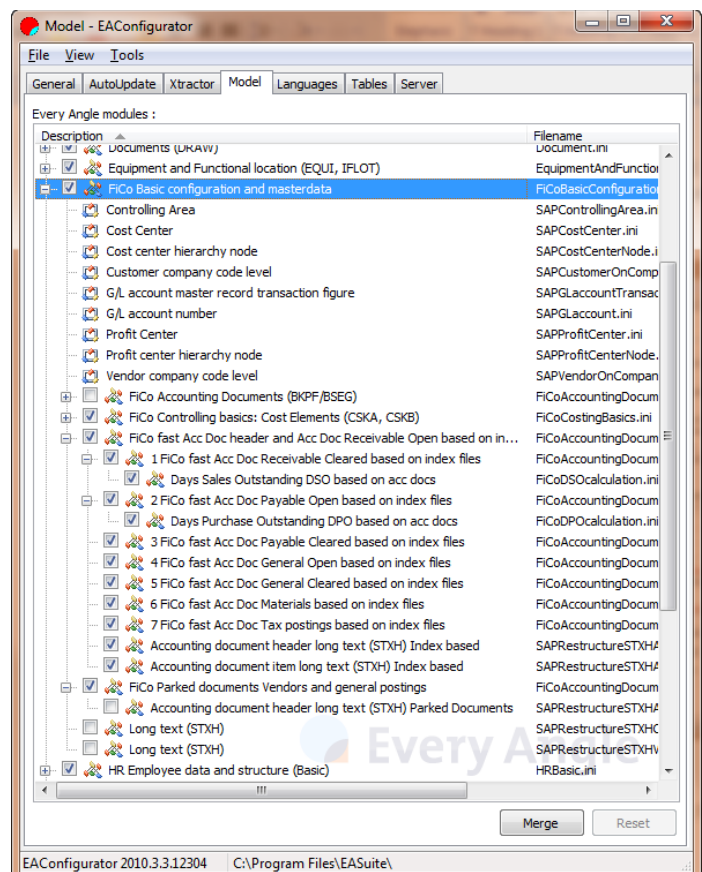
5.1 New standard modules for SAP functionality

The configuration of the Every Angle system is easy by using standardized modules. Every Angle continuously improves and extends the standard modules in close cooperation with its customers.

A new powerful standard module is the Batch-Where-Used module. With this module, the historical relations between material batches in sales orders, production orders and purchase orders are recreated based on the material movement postings. This functionality is especially powerful for food & beverage companies and in pharmaceuticals.

The most important new group of modules is the FiCo group. These modules contain the financial documents and all of its relationships. These relationships are many, since financials are the heart of the SAP system. The main table for financial documents is BSEG, which is very difficult to download because of its volume and its technical format. That is why the FiCo group offers two versions: full BSEG download, or alternatively, download of the fast index tables only. The latter also provides the possibility to more easily distinguish between the financial areas; accounts payable, accounts receivable, general ledger, tax postings, etc.

In the new Every Angle modules for FiCo, some additional properties are offered like DSO, DPO and average weighted payment terms for customers and suppliers.



The standard functionality for work orders is extended with two standard optional modules. There is a new module with functions to further analyze component availability and a module with functions to analyze lead times and lead time differences.

5.2 Extended standard modules for SAP functionality

Many of the standard modules were extended. The Plant maintenance module now has pick & choose functionality to easily add partner roles and statuses to equipments and functional locations.

The use of historic material consumption (table MVER) can be now be configured to choose between the original postings or the manually corrected entries. In addition, new properties were added like consumption trend.

5.3 System configuration basics

The availability of long texts from SAP is extended. Before, users could only see long texts created for their own logon language. However, many companies are using special languages for special text types and wanted to see all languages. Now, long texts are available for all users in all languages that were configured in the Every Angle configurator, regardless of the language they used to logon.

To support the further development of the standard modules and customer specific modules, 16 new functions for configuration are available to deal with currencies, dates and text fields, to calculate consumption in previous periods and to predict material flows and stock levels in the future.