



Defence Materiel Organisation
Ministry of Defence

Saving time in the Maintenance Process with Every Angle

TLT ing. Roman Klosinski
LCW/PE-Componenten

Date: 16 November 2011

Content



- Ministry of Defence – Logistic Centre Woensdrecht - MRO
- Every Angle implementation
- Maintenance Planning Process
- Report missing components
- Results



Logistic department

- Procurement
- Distribution
- Supply

Technical departement

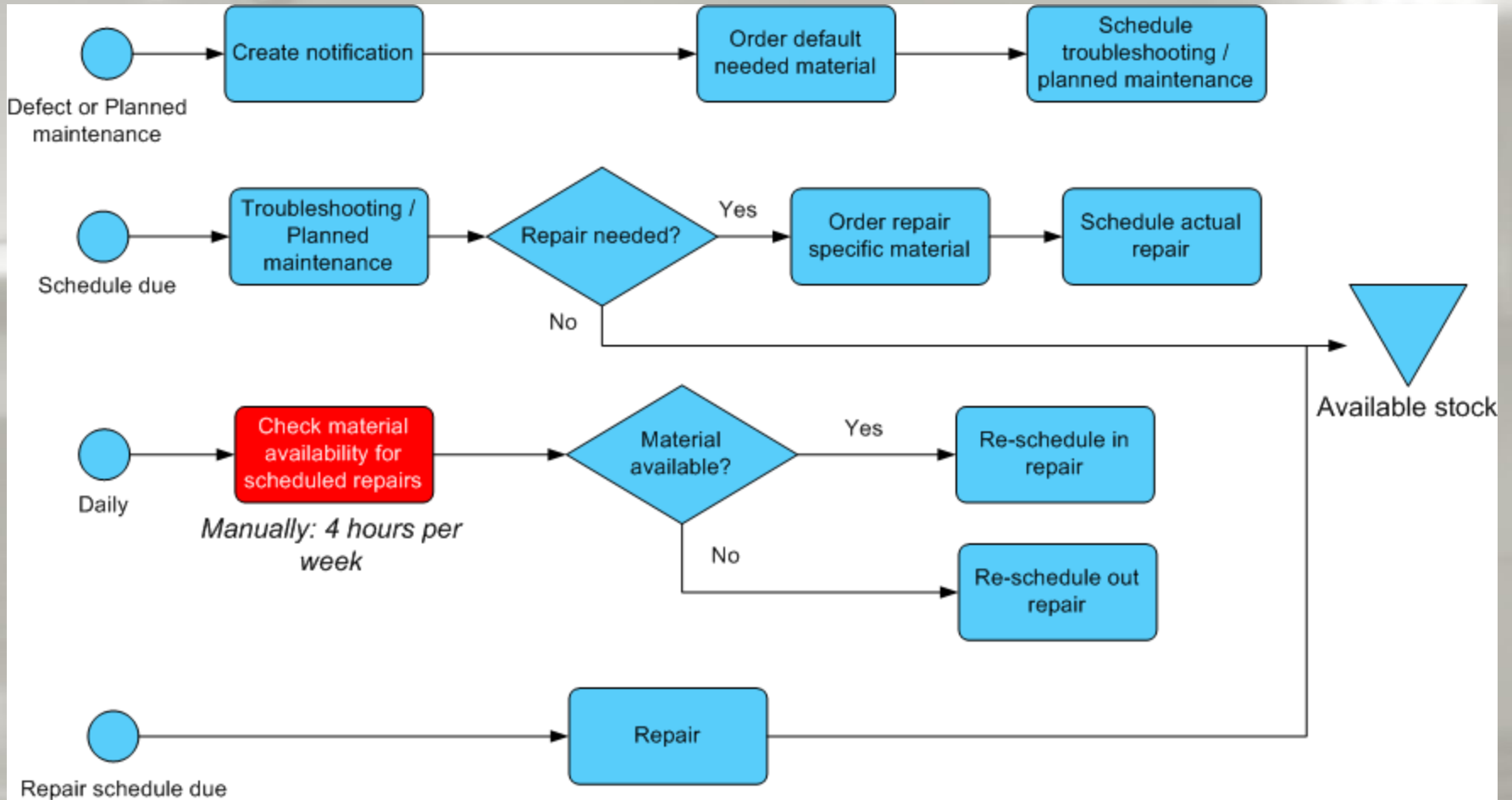
- Corrective/ Planned maintenance
- Repairs
- Overhaul
- Modifications

Every Angle



- Implemented Every Angle this year
- Started training in January
- First results after 3 training sessions
- Used intensively in planning & control of MRO processes
- Currently rolling out company wide

Maintenance Planning Process



Availability report in Every Angle



The angle provides a list of orders that are scheduled out, but because of material availability can be rescheduled in.

File Edit View Tools Administrators Help

Back Forward Stop Find New angle Save angle Save here Apply view Save view... Follow-up Export to Excel... Goto SAP Help

Stagnatie orders waarvan alles op voorraad ligt (9 items)

Notification	Order number	Work Center (Responsible w... CRHD-ARBPL	Order type deliverin...	Description (Responsible work center) CRTX-KTEXT	Description (Equipment) ADRC-NAME1 CEPCT-LTEXT ...	Order due date AFKO-GLTRP ...	Stagn. ontbr. onderdeel [71] JEST_AUFG-RN_J_...
10509574	6520239	73240110	Stock	PG Hydraulica G105 (PE COMP/Mech Syst)	1650-01-141-4875 DRIVE-UNI	31-1-2012	<input checked="" type="checkbox"/>
10519359	6525316	73250210	Stock	PG Frezen G11 (PE COMP/M&O)	5340-17-121-0093 PLATE, LO	11-1-2012	<input checked="" type="checkbox"/>
10529398	6534916	73250220	Stock	PG Draaien G11 (PE COMP/M&O)	6920-17-112-3658 DUMMY RXL	24-1-2012	<input checked="" type="checkbox"/>
10529398	6534933	73250130	Stock	PG Lasserij G11 (PE COMP/M&O)	6920-17-112-3658 DUMMY RXL	27-1-2012	<input checked="" type="checkbox"/>
10534575	6537083	73240120	Stock	PG Accessoires G105 (PE COMP/Mech Syst)	3040-01-277-4737 SECON ACT	2-11-2011	<input checked="" type="checkbox"/>
10537151	6539353	73240120	Stock	PG Accessoires G105 (PE COMP/Mech Syst)	3040-01-277-4737 SECON ACT	12-12-2011	<input checked="" type="checkbox"/>
10537152	6539355	73240120	Stock	PG Accessoires G105 (PE COMP/Mech Syst)	3040-01-277-4737 SECON ACT	14-12-2011	<input checked="" type="checkbox"/>
10537153	6539357	73240120	Stock	PG Accessoires G105 (PE COMP/Mech Syst)	3040-01-277-4737 SECON ACT	14-12-2011	<input checked="" type="checkbox"/>
10540084	6544295	73240120	Stock	PG Accessoires G105 (PE COMP/Mech Syst)	3040-01-277-4737 SECON ACT	3-11-2011	<input checked="" type="checkbox"/>

We booked the following results with the angle:

- Save 4 hours per week
- Because it's less time consuming we check more often
- We check more often so we can reduce the repair lead time
- Less error prone
- When you compare the list of orders with missing components at the start of the pilot and now, it's a lot shorter!