



Every Angle

Workshop Finance & Controlling

Nanne Sluis, Consultant
n.sluis@everyangle.com

1. Coverage of SAP modules with Every Angle

We continuously work on making Every Angle better in the field of technology, performance, user friendliness and also functionality.

From a functional point we cover more and more SAP areas. Starting with the logistic modules MM/SD/PP we expanded to eg. QM, HR, PM, WM, FI and CO.

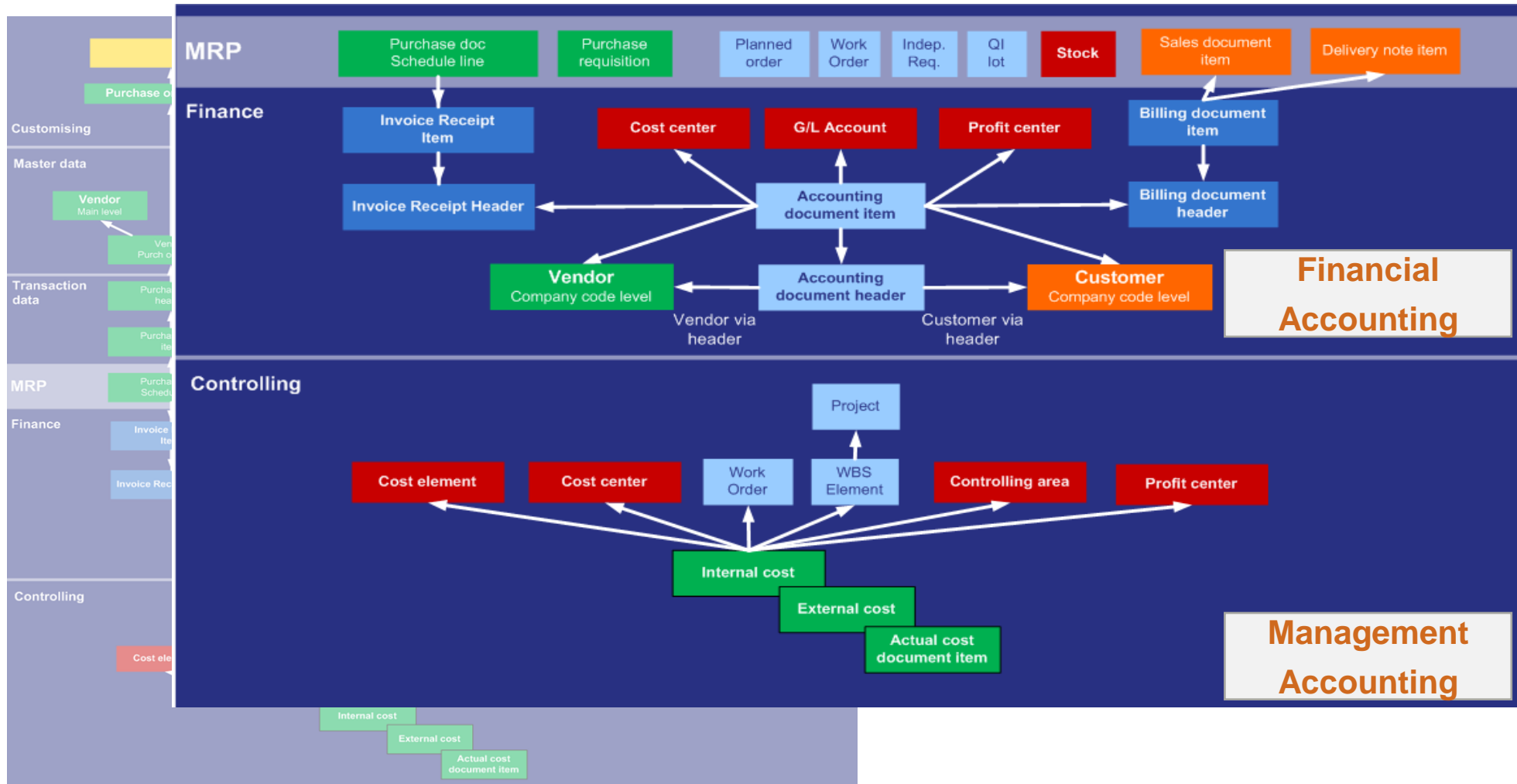
Version Example added content

3.6 SP1	Introduction Basic HR Introduction QM
3.6 SP3	Introduction PS
2010	Introduction FI
2011 SP1	Introduction CO
2011 SP4	Order-to-cash & Procure to pay



1. Areas of interest for Finance

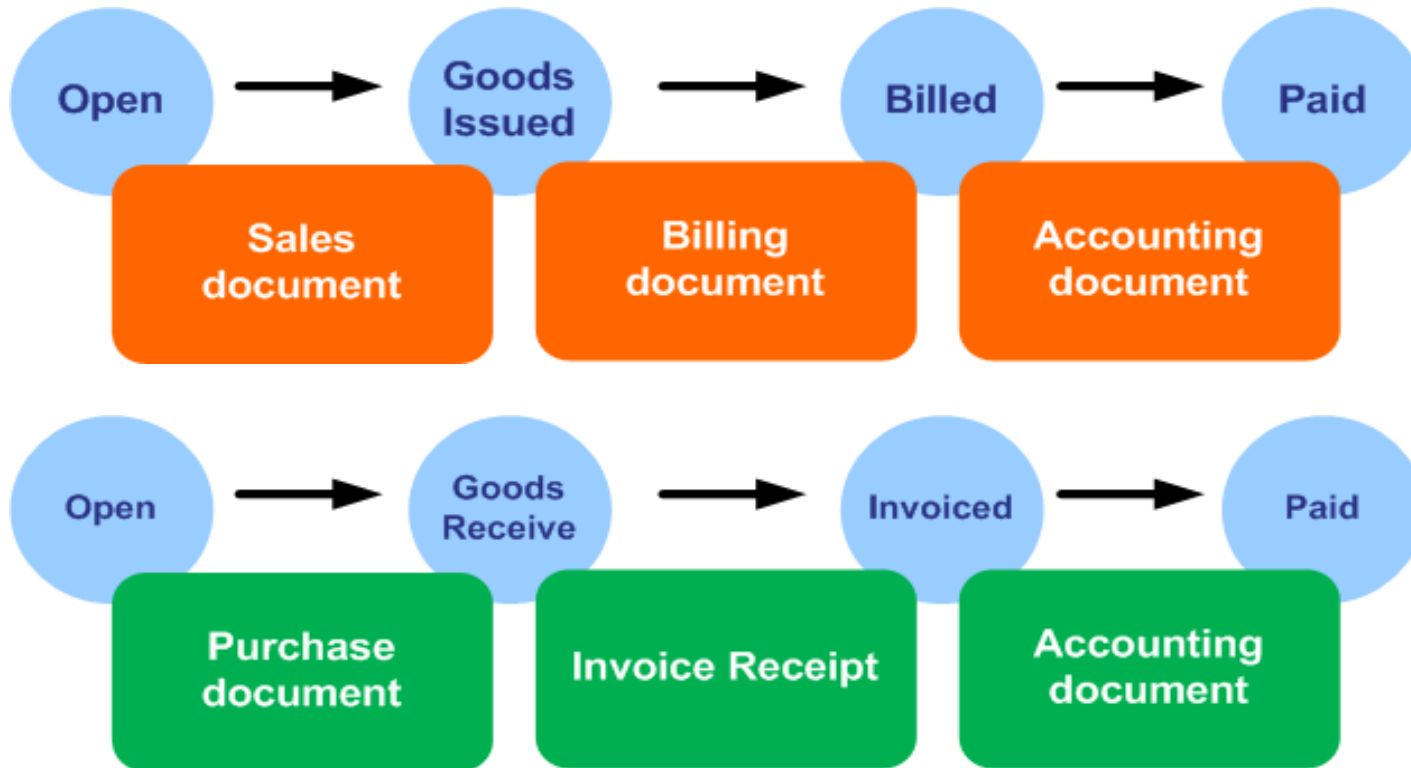
Through the object model Every Angle connects Financial and management accounting with all the details of the source data, very fast and flexible



1. Connecting logistics & finance

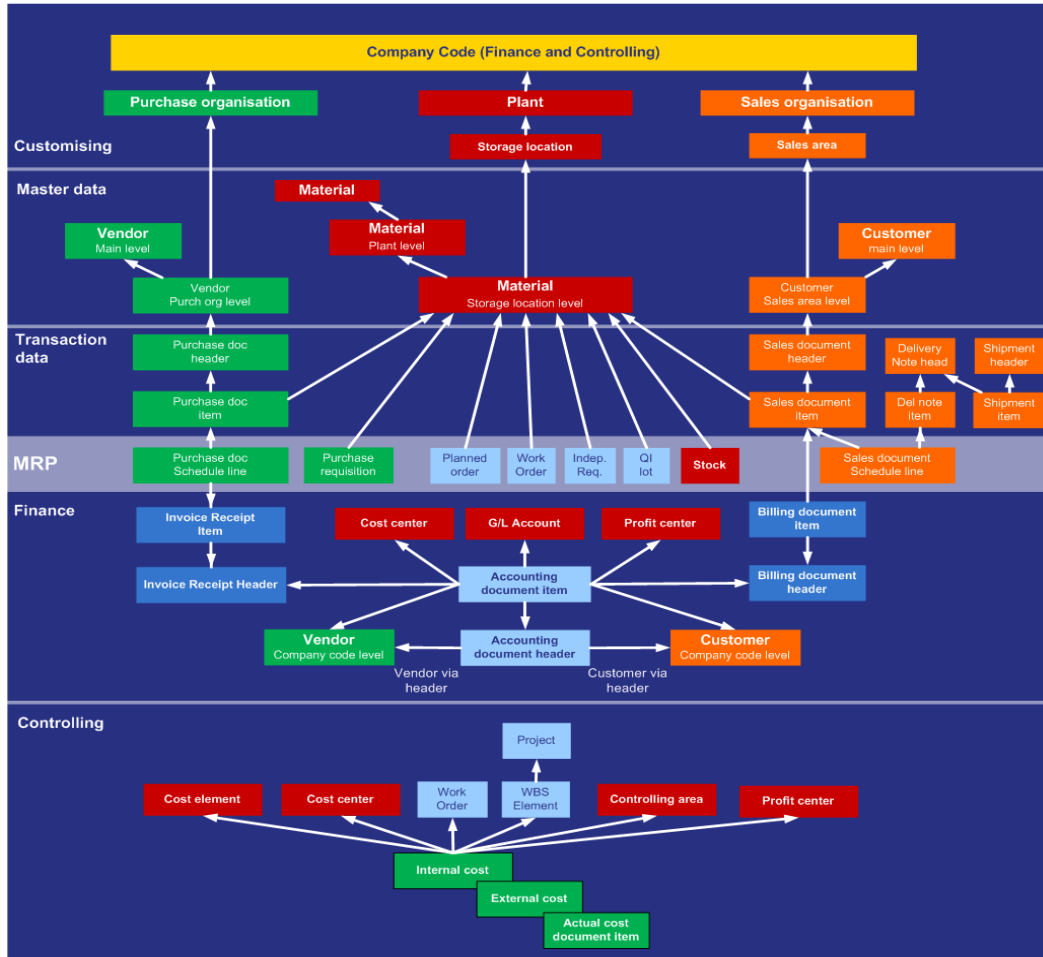
The major challenge with finance was not to get the information out of SAP, but integrating it with the logistic processes.

This was our focus in the latest release and makes the order to cash and procure to pay process transparent.



1. Basic Object Structure (PP/SD/MM/FI/CO)

Every Angle integrates and models SAP data to information from different areas in SAP such as PP/SS/MM/FI/CO.



Use Every Angle for

- Bottleneck analysis
- Back order management
- Master data management
- ...

Logistics



FICO



Use Every Angle for

- Working Capital analysis
- G/L journal analysis
- Order To Cash / Procure To Pay
- Controlling & Cost analysis

2. Working Capital analysis

Every Angle supports working capital management by easy reporting on stock, AR & AP

- Analyzing stocks

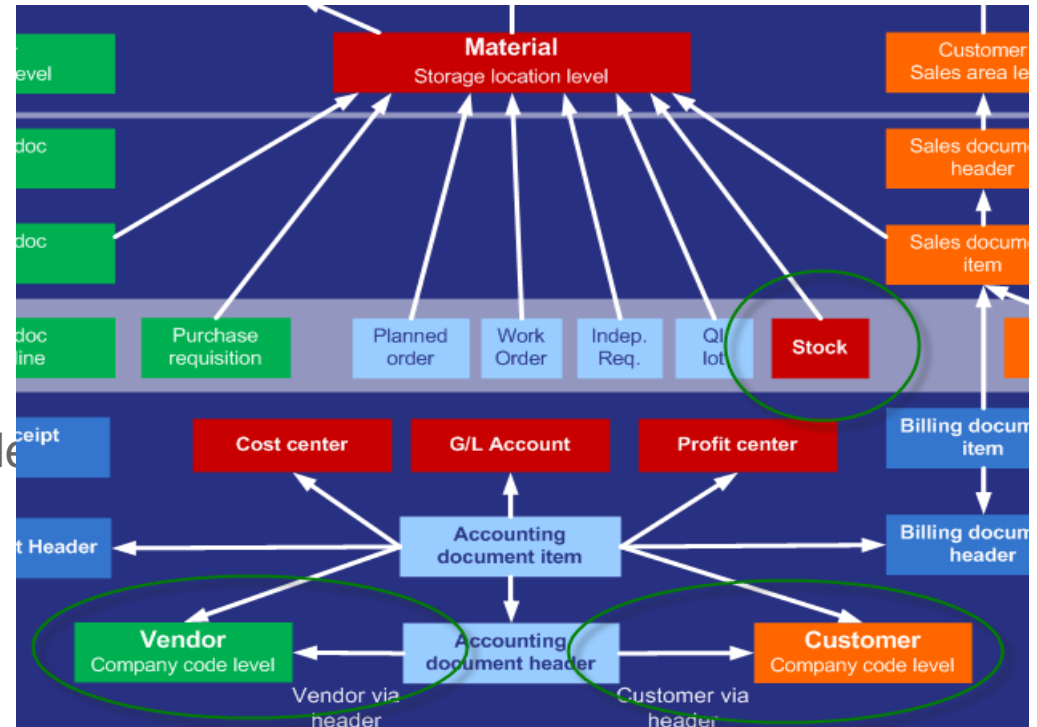
- Reporting current stock
- Find reduction opportunities

- Analyzing accounts receivable

- Reporting current accounts receivable
- Track open items

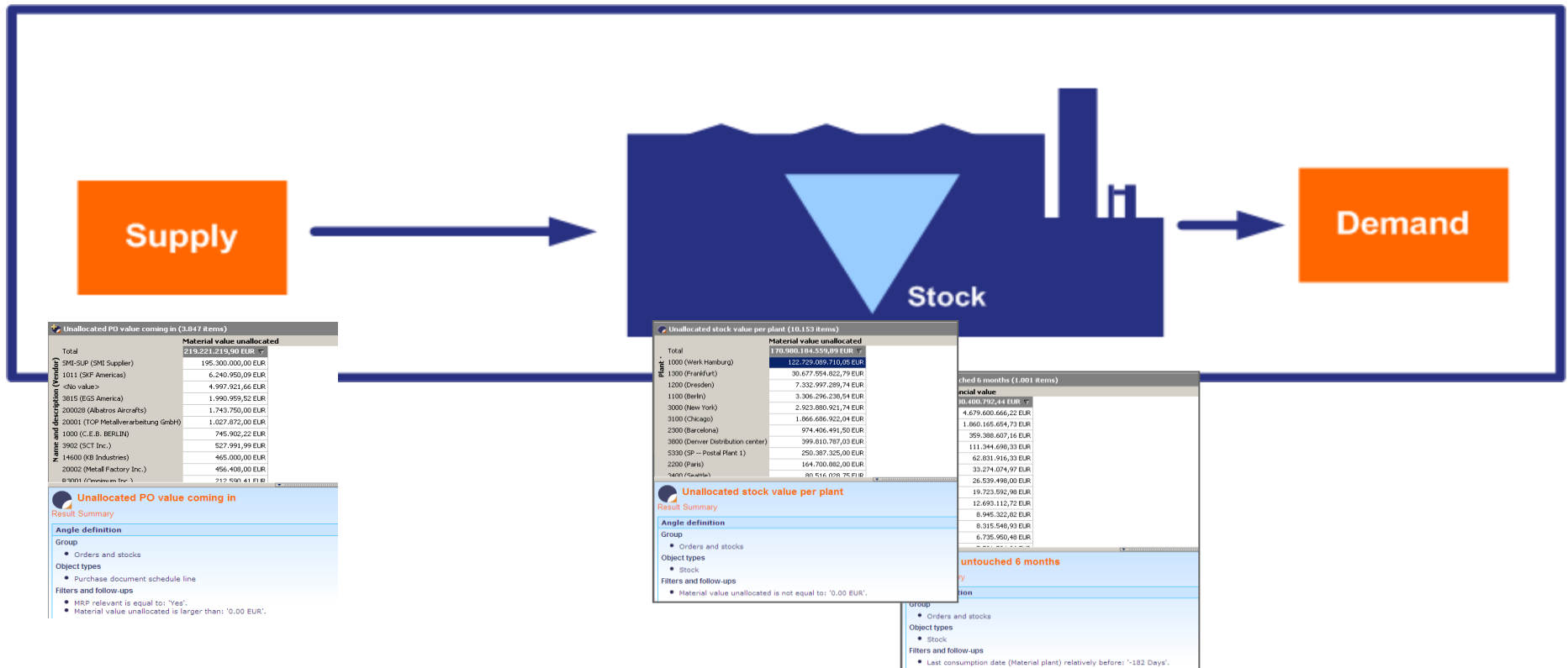
- Analyzing accounts payable

- Reporting current accounts payable
- Track open items



2.1 Analyzing stock

With Every Angle you can quickly search for opportunities to reduce your stock value. Some examples:



- Unallocated purchase orders coming in

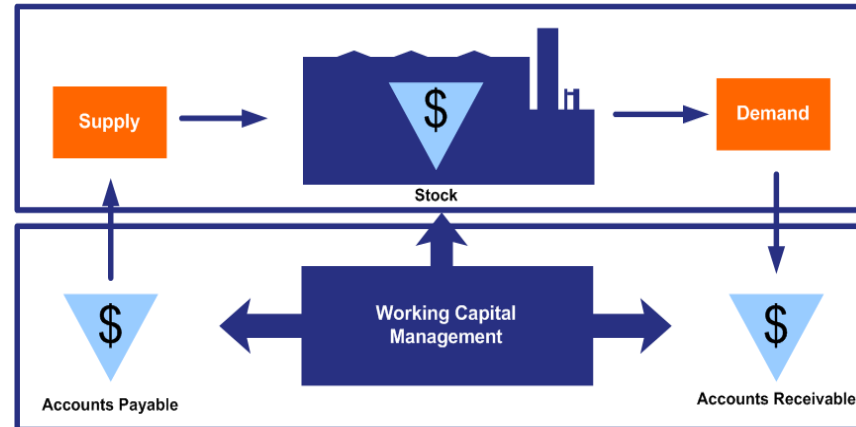
- Unallocated stock in the current planning

- Stock that has not been consumed longer than X months

2.2 Analyzing accounts receivable & payable (1)

Another possibility to reduce working capital is to manage accounts receivable / payable.

Aged accounts payable per vendor (8.598 items)			
Amount in local currency passing	Days to payday		
	< -3 months	[-3 months -2 months]	[-2 months -1 month]
Totals	36007778,56	38475811,36	-834534,59
3801 (Acme Industrial Supplies)	5377932,308	54886227,95	-361461,69
EBP-14 (EBuyers-14)	0	0	0
1098 (Productos Argentinos Imp. S.A)	0	0	0
34010 (Federal Garnishment)	0	0	0
100038 (Karen Holzblatt)	-10	-10	
200000 (Prudentia)	-11,01	-11,01	
ARAMB-00 (Araningo-00)	-12	-12	
5981 (IDES Office Products)	-20	-20	
5596 (IDES Photo Labs Inc)	-50	-50	
200017 (State of Illinois)	-130,7	-130,7	
VENDOR (Typical Vendor)	-200	-200	
1000 (C.E.B. BERLIN)	-231,15	-231,15	
200001 (Blue Cross Blue Shield)	-270,76	-270,76	



Aged accounts receivable per customer (2.772 items)			
Amount in local currency passing	Days to payday		
	< -3 months	[-3 months -2 months]	[-2 months -1 month]
Totals	257547082,2	203069388,06	13422377,24
7691 (SOXONE INC.)	112800000	67300000	5500000
7692 (SOX TWO INC.)	74000000	57000000	4000000
7693 (SOX THREE INC.)	48000000	30000000	3000000
2503 (Navegan Import & Export Group)	8592150	8009460	291950
2401 (Napoli Export)	6483072,5	6005989,5	213426,5
2502 (Miller & Son Trading Ltd.)	5919750	5516850	196050
2402 (Jshammal International Trading Co)	5289550	4936500	175900
1174 (Motomark Stuttgart GmbH)	492960,62	382874,93	36695,23
R110 (SB Warenhaus R110)	278301,66	278301,66	
1033 (Karsson High Tech Markt)	272551,95	272493,96	19,33
R112 (SB Warenhaus R112)	222817,08	222817,08	
2200 (Motomark Heidelberg GmbH)	187572	187572	
R111 (SB Warenhaus R111)	186112,01	186112,01	

Aged accounts payable per vendor

Aged accounts receivable per customer

Through the connections of Every Angle with data from other areas you can also filter & aggregated on:

- Country / Region / City /
- Account group, Industry,
-

2.2 Analyzing accounts receivable & payable (2)

Next to analyzing the data, you can also create day-to-day action list for following up e.g. customers

Acc. doc. item number	Ultimate paym...	Amount in local curr...	Billing document ...	Billing Type (Billing document header)	Created by (Billing document header)	Name and description (Customer)	D50 (Customer comp code l...	Telephone 1 (Customer)
R300/100007137/2002/1	18-1-2002	-71	90031644	FP (Billing POS-Interface)	HAMED	R313 (GM Store R313)	365	650-848 5233
R300/100007141/2002/1	18-1-2002	-36	90031648	FP (Billing POS-Interface)	HAMED	R313 (GM Store R313)	365	650-848 5233
R300/100007145/2002/1	18-1-2002	-72	90031652	FP (Billing POS-Interface)	HAMED	R313 (GM Store R313)	365	650-848 5233
R300/100007149/2002/1	18-1-2002	-45	90031656	FP (Billing POS-Interface)	HAMED	R313 (GM Store R313)	365	650-848 5233
R300/100007153/2002/1	18-1-2002	-89	90031660	FP (Billing POS-Interface)	HAMED	R313 (GM Store R313)	365	650-848 5233
1000/100001320/2001/1	19-1-2002	31	90030783	F2 (Invoice (F2))	MMUELLER	1001 (Lampen-Markt GmbH)	0	069-467653-0
1000/100001316/2001/1	19-1-2002	35	90030779	F2 (Invoice (F2))	MMUELLER	1033 (Karsson High Tech Ma...	290	089-456897-0
1000/100001322/2001/1	19-1-2002	725	90030785	F2 (Invoice (F2))	MMUELLER	1174 (Motomarkt Stuttgart ...	311	0711-805964
1000/100001323/2001/1	19-1-2002	31890	90030786	F2 (Invoice (F2))	MMUELLER	1174 (Motomarkt Stuttgart ...	311	0711-805964
1000/100001318/2001/1	19-1-2002	23	90030781	F2 (Invoice (F2))	MMUELLER	1300 (Christal Clear)	0	0511-347589-0
R300/100007154/2002/1	22-1-2002	-78	90031661	FP (Billing POS-Interface)	HAMED	R310 (GM Store R310)	365	214-738-2224
R300/100007158/2002/1	22-1-2002	-68	90031665	FP (Billing POS-Interface)	HAMED	R310 (GM Store R310)	365	214-738-2224
R300/100007162/2002/1	22-1-2002	-107	90031669	FP (Billing POS-Interface)	HAMED	R310 (GM Store R310)	365	214-738-2224
R300/100007166/2002/1	22-1-2002	-102	90031673	FP (Billing POS-Interface)	HAMED	R310 (GM Store R310)	365	214-738-2224
R300/100007170/2002/1	22-1-2002	-3	90031677	FP (Billing POS-Interface)	HAMED	R310 (GM Store R310)	365	214-738-2224

Angle text | Company Code | Material via header

Accounts receivable action list

Result Summary

Angle definition

Group

- Finance and controlling

Object types

- Accounting document item open customer

Filters and follow-ups

- Ultimate payment date relatively before: '-30 Days'

Have a day-to-day action list with:

- Details from the billing document
- Details from the customer like telephone number, ...
- All item more than X days over due
- Flexible filters to select only the lines you are responsible for
- ...

2.3 Analyzing customer & vendor payment behavior

Every Angle calculates days sales outstanding (DSO), days purchase outstanding (DPO) and payment term performance for customers and vendors.

Payment performance customer (64 items)						
Name and description (Customer)	Revenue last 12 months in ...	Total amount receivable in ...	DSO	Weighted avg. payment term realized 12 months	Weighted avg. ultimate payment term 12 months	Weighted avg. payment term difference ultimate-realized 12 ...
1000 (Becker Berlin 2)	38.139,20 EUR	21.639,20 EUR	207,0916	21	45	-24
1001 (Lampen-Markt GmbH)	440.960,70 EUR	140,40 EUR	0,1162	0	45	-45
1032 (Institut fuer Umwelt...)	3.811.813,40 EUR	457.694,30 EUR	43,8265	2,916	45	-42,084
1033 (Karsson High Tech ...)	7.193.034,59 EUR	1.140.851,87 EUR	57,8909	2,1946	45	-42,8054
1050 (Becker AG)	15.604.336,03 E...	7.626.621,14 EUR	178,3938	122,5472	44,4504	78,0968
1172 (CBD Computer Base...)	4.618.320,24 EUR	226.996,86 EUR	17,9403	20,3247	45	-24,6753
1174 (Motomarkt Stuttgart...)	13.952.240,23 E...	1.265.244,83 EUR	33,0997	2,3283	45	-42,6717
1175 (Elektromarkt Bamby)	-2.180.335,44 EUR	-2.330.986,96 EUR	390,2199	0	45	-45
1300 (Christal Clear)	869.862,93 EUR	258,60 EUR	0,1085	0	45	-45
1360 (Amadeus)	4.195.982,98 EUR	247.283,54 EUR	21,5107	33,67	45	-11,33
1460 (C.A.S. Computer Ap...)	5.004.223,95 EUR	287.286,24 EUR	20,9542	47,6316	44,7047	2,9269
1900 (J & P)	17.312.512,80 E...	3.122.720,00 EUR	65,8364	123,027	45	78,027
1901 (Motor Sports)	9.418.889,77 EUR	1.941.857,82 EUR	75,2507	1,8594	45	-43,1406
2000 (Carbor GmbH)	5.328.880,29 EUR	281.964,68 EUR	19,3131	1,7961	45	-43,2039
2004 (SudaTech GmbH)	6.770.529,29 EUR	393.732,54 EUR	21,2262	44,5313	45	-0,4687
2007 (Software Systeme G...)	4.300.612,30 EUR	329.809,47 EUR	27,9915	14,4513	45	-30,5487
2130 (COMPU Tech. AG)	4.505.531,43 EUR	369.928,01 EUR	29,9684	21,1472	45	-23,8528

Payment performance customer

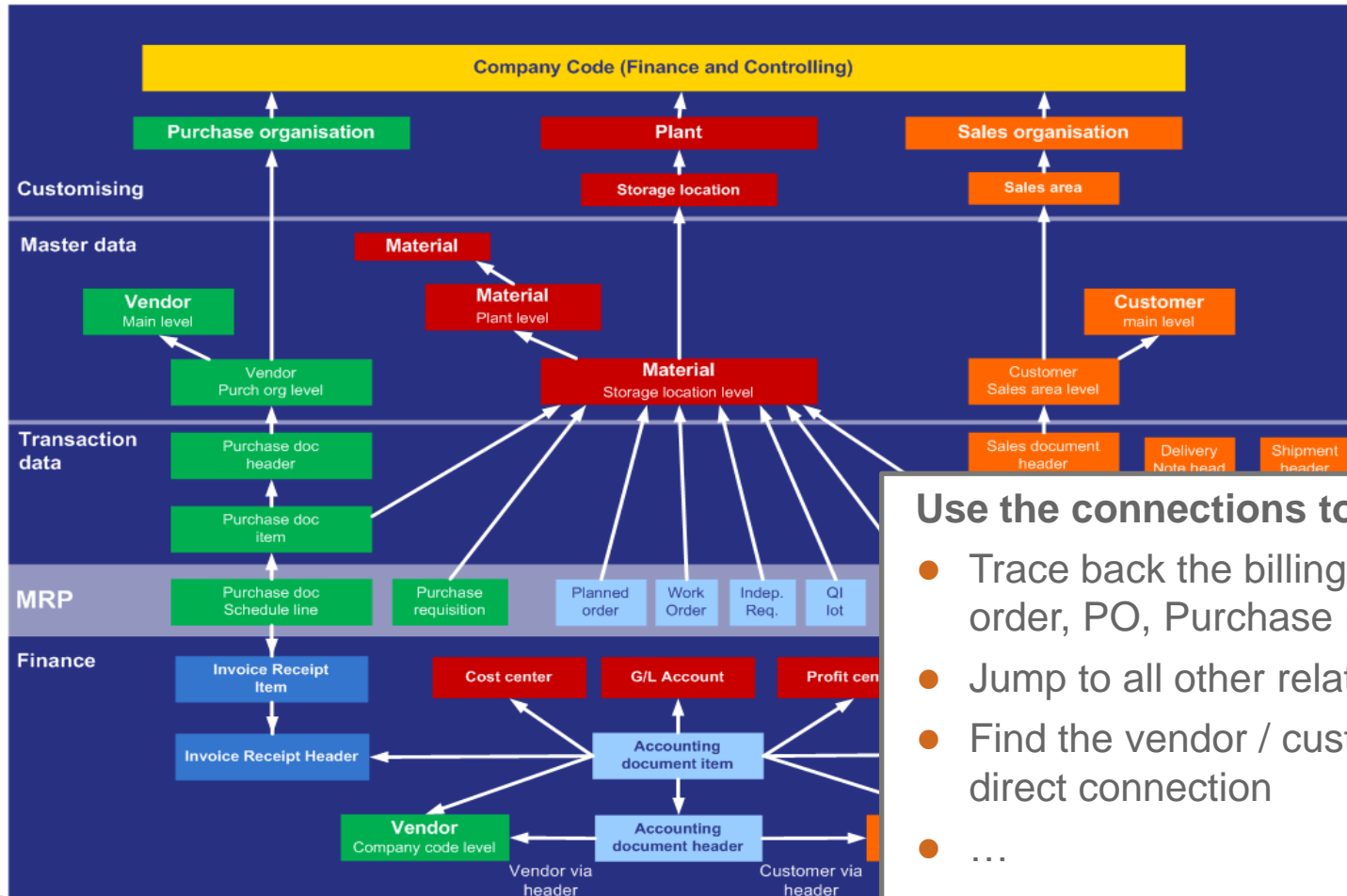
Result Summary

Angle definition

Information

3. G/L Journal analysis

From the accounting document items there are links to the originating documents. Using these relationships, with Every Angle you can do all kinds of G/L journal analyses.



Use the connections to:

- Trace back the billing document, invoice, sales order, PO, Purchase req, ...
- Jump to all other related accounting documents
- Find the vendor / customer involved without a direct connection
- ...

3.1 G/L Journal Analysis

Every Angle has a lot of possibilities to track general ledger postings to it's operational source using all the predefined relationships.

Example: With small price differences on a payment, SAP does not save the vendor in the account document item.

Every Angle does report the vendor through the other related accounting documents item. This is possible because of the advance object structure.

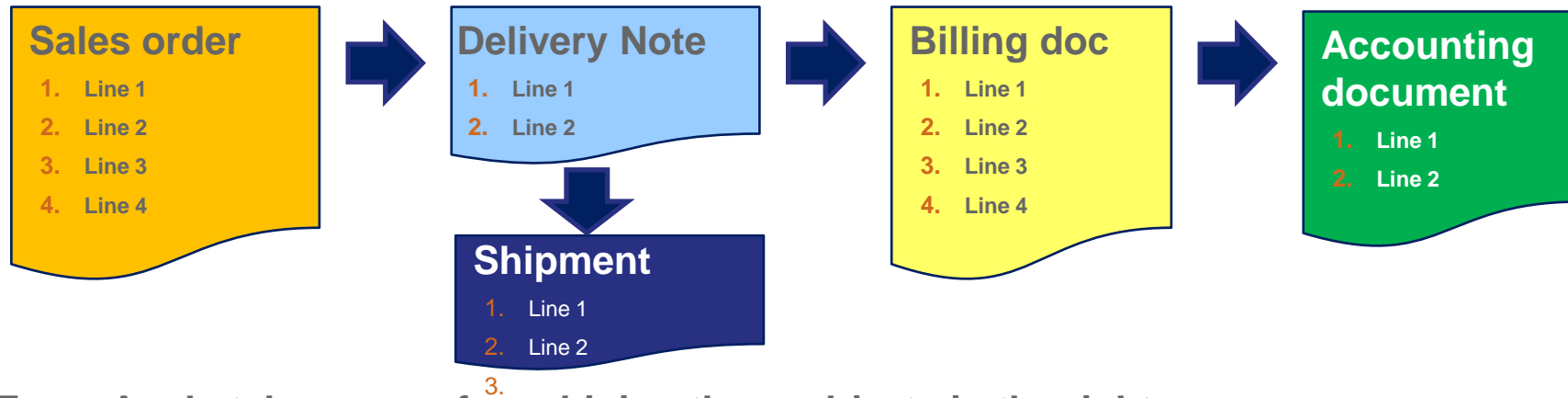
The screenshot displays the SAP Document Overview interface. On the left, a table titled '1) Small price diffs (15 items)' shows the distribution of amounts across various vendors in DEM and EUR. On the right, the 'Invoice receipt (RE)' details are shown, including document number, date, and company code. Below this, an item list table shows three items, with the third item, 'Small price loss - i', highlighted by a red circle. A red arrow points from this item to the '5' in the 'Totals' column of the table on the left.

		Currency (Accounting doc. header)		
Amount in local currency		Totals	DEM (German Mark)	EUR (Euro (EMU currency as of 01/01/99))
Totals		14	7	
1000 (C.E.B. BERLIN)		6	6	
1003 (Gusswerk US)		1	1	
1007 (Bike Retail & Co.)		1	1	
1070 (Poly AG)		1	1	
1101 (ABC Dienstleistungs GmbH)		0		
3815 (EGS America)		2		
R1001 (Walter & Schulz GmbH & Co KG)		0	0	
R3003 (Fashion Inc.)		5		

Item	PK	Account	Account short text	Assignment	Tx	Amount	Text
1	31	R3003	Fashion Inc.		00	9.505,00-	
2	86	191100	Goods Rcvd/Invoice R	450000601000010	00	9.500,00	
3	40	231900	Small price loss - i	19990128	00	5,00	

4. Order To Cash

In SAP, an order to cash process and procure to pay is split up into multiple objects. Connecting these objects is very complex.

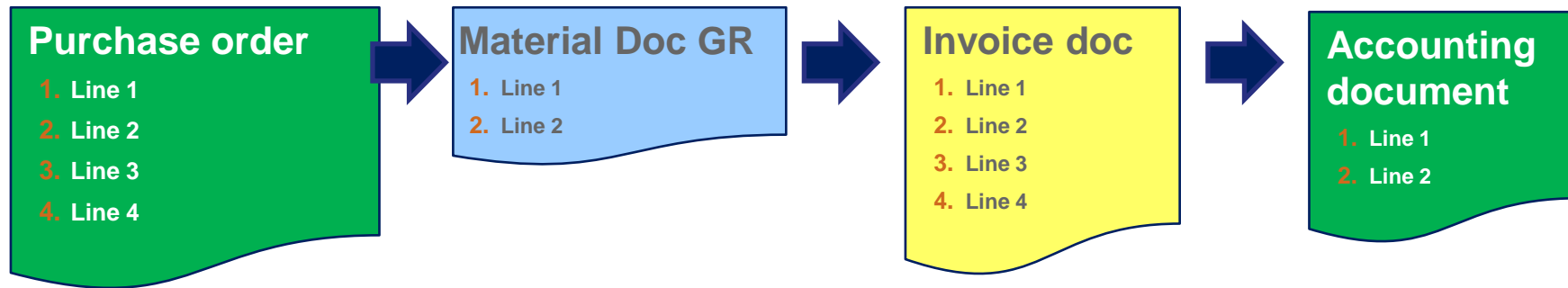


Every Angle takes care of combining these objects in the right way.

Order 2 Cash Example 2 (70 items)								
Object type EA	Order number	Execution status	Bottleneck type	Delivery reliability	Shipment header	Order due date	Realized finish date	Payment status (SD item)
Sales document schedule line	6221/10/1	Closed	None	Delivered on ...	1114	14-Feb-00	14-Feb-00	Cleared
Sales document schedule line	10994/10/1	Closed	None	Delivered on ...	1205	12-Apr-05	13-Apr-05	Open
Sales document schedule line	11236/10/1	Closed	None	Delivered early	1234	22-Jun-05	23-Apr-05	Open
Sales document schedule line	7925/10/1	Open	Delay in distribu...	Late	10003	27-Aug-02		Unknown
Sales document schedule line	10192/10/1	Open	Delay in distribu...	Late	1124	02-Jul-04		Unknown

4. Procure to Pay

Also for the procure to pay process Every Angle connects the right objects in the right way.



Every Angle takes care of combining these objects in the right way

Procure to pay (31.454 items)							
Order number	Name and description (Vendor)	Ordered value	Order status purchase	Confirmation delivery date	Realized finish date	Document Date (Invoice receipt header)	Payment status (Invoice receipt...)
3000000204/4/1	3910 (Infix Corporation)	28,46 EUR	Ordered				
4500015535/10/1	R300 (DC R300)	28,12 EUR	Stock committed				
3000000116/1/1	3745 (Destec Office Supplies)	27,90 EUR	Closed by GR		7-5-2001	7-5-2001	Paid
3005000076/1/1	3411 (Delta Steel Inc.)	27,90 EUR	Closed by GR		12-3-2003	12-3-2003	Unpaid
3005000101/1/1	3701 (eSupplier, Inc)	27,90 EUR	Closed by GR		7-3-2003		
3000000034/6/1	3021 (MOBILE Inc.)	27,77 EUR	Closed by GR		19-12-2000	19-12-2000	Paid
3000000008/2/1	3910 (Infix Corporation)	27,76 EUR	Closed by GR		19-12-2000	19-12-2000	Paid
3005000136/2/1	3910 (Infix Corporation)	27.76 EUR	Closed by GR		14-4-2003	14-4-2003	Paid

5. Controlling

With the controlling data you can analyze cost across work orders, cost centers & WBS elements (projects).

In SAP this kind of information can often be found in the individual order or WBS element.

Here you can compare planned, target and actual cost.

Order
Order Type
Plant
Material

Planned quantity 120 KG kg

Target cost version 0 Target Costs for Total Variances

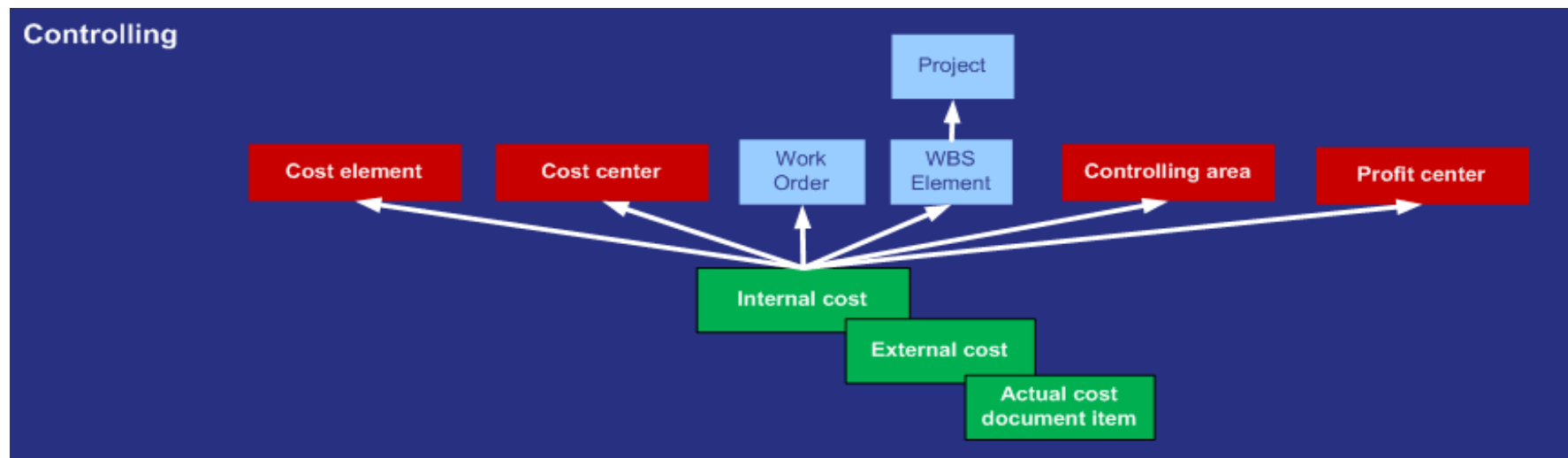
Cumulative data
Legal valuation
Company code cur./Object cur.

Cost eleme...	Cost element (Text)	Origin	Σ Total target costs	Σ Total actual costs	Σ Target/actual var.	T/I var(%)	Currency
6100030	Consumption of raw materials	1815/4881	0,00	46,48	46,48		EUR
6100030	Consumption of raw materials	1815/4882	0,00	34,23	34,23		EUR
6102030	Consumption of packaging materials	1815/4870	0,00	14,04	14,04		EUR
6104000	Consumption of intermediates - full c...	1815/4942	0,00	44,93	44,93		EUR
6104000	Consumption of intermediates - full c...	1815/2309	0,00	9,72	9,72		EUR
6291010	Offset account quantity/price variance -		0,00	202,92-	202,92-		EUR
6291010	Offset account quantity/price variance -		0,00	210,59-	210,59-		EUR
7605005	Packaging	4100/P093	0,00	53,52	53,52		EUR
			• 0,00 •	210,59- •	210,59-		EUR
			•• 0,00 ••	210,59- ••	210,59-		EUR

5.1 Controlling

Possible reports with Every Angle:

- Planned versus actual cost of one or more
 - Work orders
 - WBS elements (projects)
 - Cost centers
- Actual cost per cost element per period
- Actual cost per work order / WBS element excluding settlements
- Actual cost balance > 0 of closed work order
- Actual versus planned hours on work order / WBS elements / Cost centers



5.2 Example: planned and actual hours

Because most companies allocated the cost of hours as specific as possible, you can report on the actual and planned hours from Controlling.

Actual versus planned hours per project (257 items)

Name and description (Project)	Value Type		
	Totals	01 (Plan)	04 (Actual)
Totals	7346	3768	3578
I3281 (Payroll System)	1720	1080	640
I3200 (Portal Implementation)	1011	600	411
I3216 (Recruitment System)	936	760	176
2 (Project for Service Provider)	620		620
I0002 (Neupositionierung / E-commerce / Interne)	520	520	
0-1000 (New administration building)	407	200	207
I0099 (Nellos I/0099)	310	310	
NPRD-CAR3 (PRD Cardiology 3)	200		200
NPRD-MET1 (PRD Metabolism Endocrinology 1)	150		150
8068 (MAB Administration Building)	149	149	
U-ALT3212 (Administration Building)	149	149	

Actual versus planned hours per project (257 items)

Name and description (Project)	Value Type		
	Totals	01 (Plan)	04 (Actual)
Totals	834043211,1	211707474,27	622335736,83
NPRD-MET2 (PRD Metabolism Endocrinology 2)	332250000	211500000	120750000
I3281 (Payroll System)	131149,59	80270,5	50879,09
I3216 (Recruitment System)	61621,92	44998,6	16623,32
U-ALT3212 (Administration Building)	16838,77	16838,77	
8068 (MAB Administration Building)	16838,77	16838,77	
I3200 (Portal Implementation)	29231,51	16274,42	12957,09
I3000 (IT Implementation)	10000	10000	
I0099 (Nellos I/0099)	9361,43	9361,43	
0-1000 (New administration building)	17435,81	8568,2	8867,61
I0002 (Neupositionierung / E-commerce / Interne)	4323,58	4323,58	
1-4275/P (Inv.Kst.4275)	1300,04		1300,04



Result Summary

Angle definition

Group

- Finance and controlling

Object types

- Internal costs
- External costs

Filters and follow-ups

- WBS element · has a value.
- **Unit of Measure is equal to: 'h (Hour)'.**

Quantity based



Result Summary

Angle definition

Group

- Finance and controlling

Object types

- Internal costs
- External costs

Filters and follow-ups

- WBS element · has a value.
- **Unit of Measure is equal to: 'h (Hour)'.**

Value based

Questions

Want to know more about FICO?

We also have a FICO Power user training available. Please let us know if you want to join a planned training in Gouda or request an on site training.

We've put together a short questionnaire to see if your expectation match the current possibilities, please fill it in and return it to help us improve!

